

survitec

470 GPM

INFLATABLE BOAT ↓



Engineered to SOLAS standards, the 470 GPM comprises of a skin and buoyancy tube manufactured from UV resistant Hypalon with independent air compartments and safe, flush integrated valves. The boat hull features an inflatable keel inserted into sleeve sections. The 470 GPM is equipped with a single inflation system which can be used to inflate the all buoyancy compartments including the keel, with each chamber protected with pressure relief valves. A heavy duty construction, advanced performance capabilities and innovative design, the 470 GPM is fully adaptable for a variety of applications including fast rescue, infiltration and extraction, and covert missions. Fully customisable accessories such as reinforcements, handles, ropes and other optional extras.



FEATURES

- DESIGN AND CONSTRUCTION BENCHMARKED AGAINST SOLAS RESCUE BOAT STANDARDS
- HEAVY DUTY CONSTRUCTION, MANUFACTURED FROM UV RESISTANT, ROBUST HYPALON FABRIC
- AVAILABLE IN 3 DIFFERENT FLOOR OPTIONS
- CUSTOMIZABLE ACCESSORIES SUCH AS REINFORCEMENTS, HANDLES AND ROPE
- INNOVATIVE EXTRAS TO ENHANCE THE OPERATORS CAPABILITIES



Superior in-water performance

470 GPM

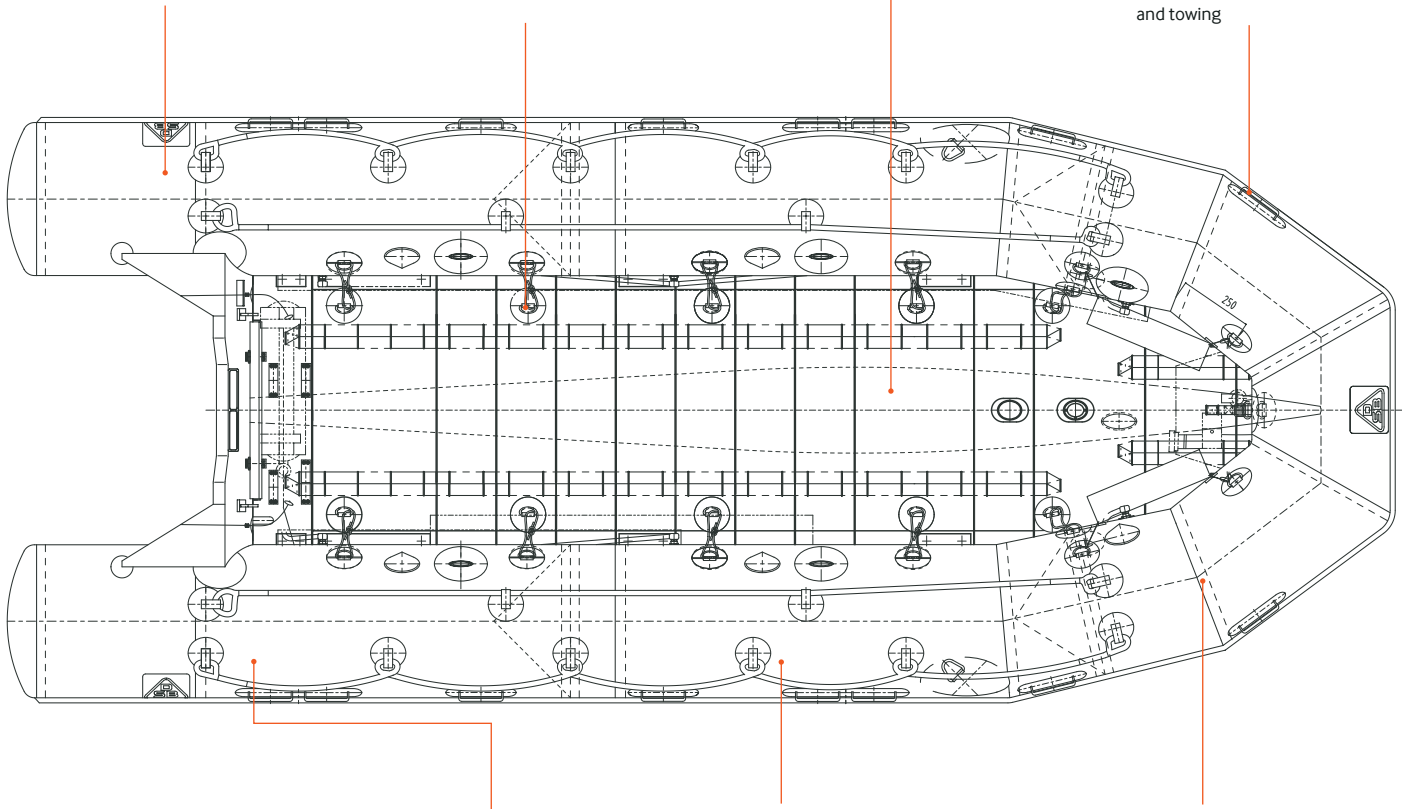
INFLATABLE BOAT

Full warranty on spare parts

In-field repair capabilities
and low maintenance burden

Easy to pack and rapidly deployable

Ultra-light construction with
multiple handles for lifting
and towing



Multiple stowage
compartments with
detachable stowage bags

Fully customisable accessories
such as reinforcements, handles
and ropes

Designed for air dropping activity

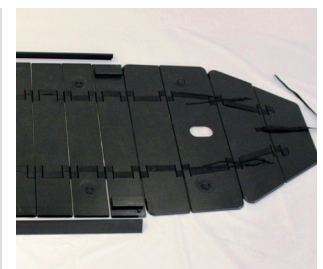
Technical & Performance Information

TECHNICAL DATA	
Length overall (m)	4,700
Width overall (m)	1,955
Length inside (m)	3,400
Width inside (m)	0,915
Weight hull (kg)	81
Buoyancy chambers (Stk)	5
Max. Payload (kg)	1420
Crew limit (Stk)	10
Max. Motorization (KW) / (PS)	44 60
Max. Weight motorization (single or twin) (kg)	140
Single Point Inflation System	Single or twin cylinder inflated in less than a minute

Rapid deployable tow	Fixed tow system fitted to craft for fast recovery
Buoyancy (m3)	1,98
Boat inner surface (m2)	2,93
Tube diameter (cm)	52
Tube diameter bug (cm)	47
Fabric	Hypalon 1670 dtex

THREE DIFFERENT FLOOR OPTIONS AVAILABLE

- Segmented floor
- Roll-up floor
- Inflatable floor



GET IN TOUCH

Phone +49 55 3430 1000

Fax +49 55 3430 1200

Email info@survitecgroup.com

www.survitecgroup.com

Angerweg 5, D-37632, Germany